

Scrutiny Review – attainment gap Autumn 2014

1. Context and key characteristics of the LAC cohort

Southwark is a diverse borough and has a relatively high number of looked after children compared with other boroughs.

	2011/12	2012/13	2013/14	Notes
Total number of pupils on LAC Education School List as at end of academic year 2013/14	350	375	339	2013/14 Yr 12 cohort – an additional 81 learners (total pupil no. Yr R to 12 = 420)
Number of pupils continuously in care for 12 months as at 31 st March (number)	238	242	263	More of our children staying in care longer
Children attending schs in/out of boro	41/59	39/61	40/60	The majority of CLA are placed out of borough.
Children Looked After for 12 months continuously by SEN Statements	29	22	32	The national average for ALL pupils is 2.8%.
Gender F/M	44/ 56	44/56	45/55	

The majority of young people are placed in education provision out of borough. The LAC Education Team attends PEPs across the large geographical spread of Southwark CLA. PEP meetings are used as the major tool to improve education outcomes and support long-term stability. Liaising with schools, social care, IROs, Admissions Services, SEN and health organisations, the team works across services, reducing disruption to education and promoting the early identification, and removal, of barriers to learning. The team is experienced in brokering positive relationships with new schools. The introduction of a letter to headteachers and designated teachers on a pupil's entry to care has improved early communications with schools.

2. Improving LAC educational outcomes

Most pupils enter care at low starting points. Depressed attainment levels on entry to care may be attributable to (i) pupils missing education (ii) care histories (iii) the impact of coming into care (iv) the weighting of this cohort towards special educational needs.

Pupils with statements of special educational needs. The national incidence of all statemented pupils is 2.8%. According to DfE published data, the Southwark LAC incidence is 34.6%, higher than London LAC (29.6%) and England LAC (28.5%).

NCY	No. of pupils with a statement of SEN (March 2014)	%
R	3	12.0%
1	1	7.1%
2	4	19.0%
3	4	19.0%
4	5	25.0%
5	7	29.2%
6	9	28.1%
7	7	25.0%
8	7	29.2%
9	12	44.4%
10	13	31.0%
11	19	28.8%

The statutory requirements of SEN statements are additional, but not necessarily complementary, to the requirements of looked after status. The team works closely with Southwark SEN department to secure best provision to meet the needs of these pupils. Annual statement reviews are prioritised by LAC Education Advisers.

Key Stage 2 outcomes, DfE published data 2010/11 to 2012/13

	2010/11	2011/12	2012/13				
	Southwark LAC	Southwark LAC	Southwark LAC	All England LAC	London LAC	ALL Southwark	Gap with ALL Southwark (%)
No of eligible pupils	10	15	15	2290	290	2736	
L4+ English/reading	x	71%	71%	63%	72%	87%	-16
L4+ writing	N/A	71%	57%	55%	69%	84%	-27
L4+ GPS*	N/A	N/A	50%	45%	55%	78%	-28
L4+ maths	x	57%	57%	59%	69%	87%	-30
	Exceeding LAC national average						

*GPS – Grammar, punctuation and spelling

In 2012/13, fifteen Southwark pupils were included in the DfE measure of LAC KS2 attainment making meaningful interpretation problematic given each Southwark pupil is worth over 6%. Level 4 English attainment was, again, greater than all England LAC while year-on-year comparisons with all London LAC remain mixed. This year, Southwark LAC performed lower than London LAC (percentage gaps: reading 1, writing 12, GPS 5, maths 12). The attainment gap with all Southwark pupils remains relatively similar at 16% for reading and 30% for maths.

Key Stage 4

	2010/11	2011/12	2012/13				
	Southwark LAC	Southwark LAC	Southwark LAC	All England LAC	London LAC	ALL Southwark	Gap with ALL Southwark (%)
No of eligible pupils	40	30	45	4870	790	2346	
5+ GCSE A* - C	50%	31%	42.2%	36.6%	38.9%	85.1%	-42.9
5+ GCSE A* - C inc Eng & ma	26.2%	x	26.7%	15.3%	20.8%	65.2%	-38.5
A-C Eng & ma	26.2%	x	28.9%	16.1%	21.9%	66.7%	-37.8
	Exceeding England LAC and London LAC outcomes						

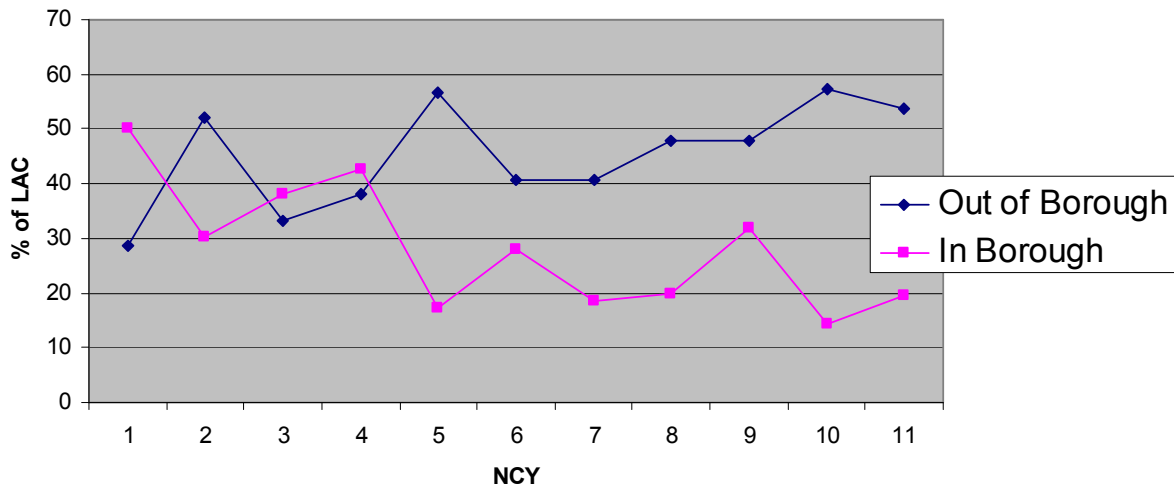
In 2012/13, GCSE outcomes for Southwark LAC in all key attainment measures are higher than outcomes for all England LAC and all London LAC. Since 2009, attainment in English and maths at GCSE grades A* to C has risen year on year. The gap with Southwark schools has narrowed since 2009/10 when the difference in five A* - C was 55%.

Southwark LAC attending secondary schools in Southwark achieved higher than those attending schools outside of the authority. Here the attainment gap is reduced to: 5 A*-C - 32.5%, 5 A*-C inc Eng & ma - 23.1%, A-C Eng & ma - 19.3%.

Attainment – as at Autumn 2013

Pupils below age-related expectation in/out of borough (expressed as a % of all Southwark looked after children in each year group as at end December 2013):

LAC below ARE in and out of borough



Improving pupil progress

Pupils that are placed out of borough are furthest adrift from age-related expectation. Years 10 and 11 represent the largest group of newly-looked after young people and here the gap with age-related expectation is greatest. Looked after children are placed out of borough as more specialist foster care placements are sought to manage most complex needs.

Pupils receive the same input and Education Advisor presence regardless of placement location.

Personal Education Plans are supported and a rigorous approach to PEP tracking ensures that schools' use of Pupil Premium (LAC) is monitored. Schools must demonstrate that Pupil Premium is being used to best address gaps in pupil achievement.